

Celebration

CONDOMINIUMS AT BRIDLEWOOD MALL

Something Special Is Happening!



*Let The
Celebration
Begin*





Artist concept.



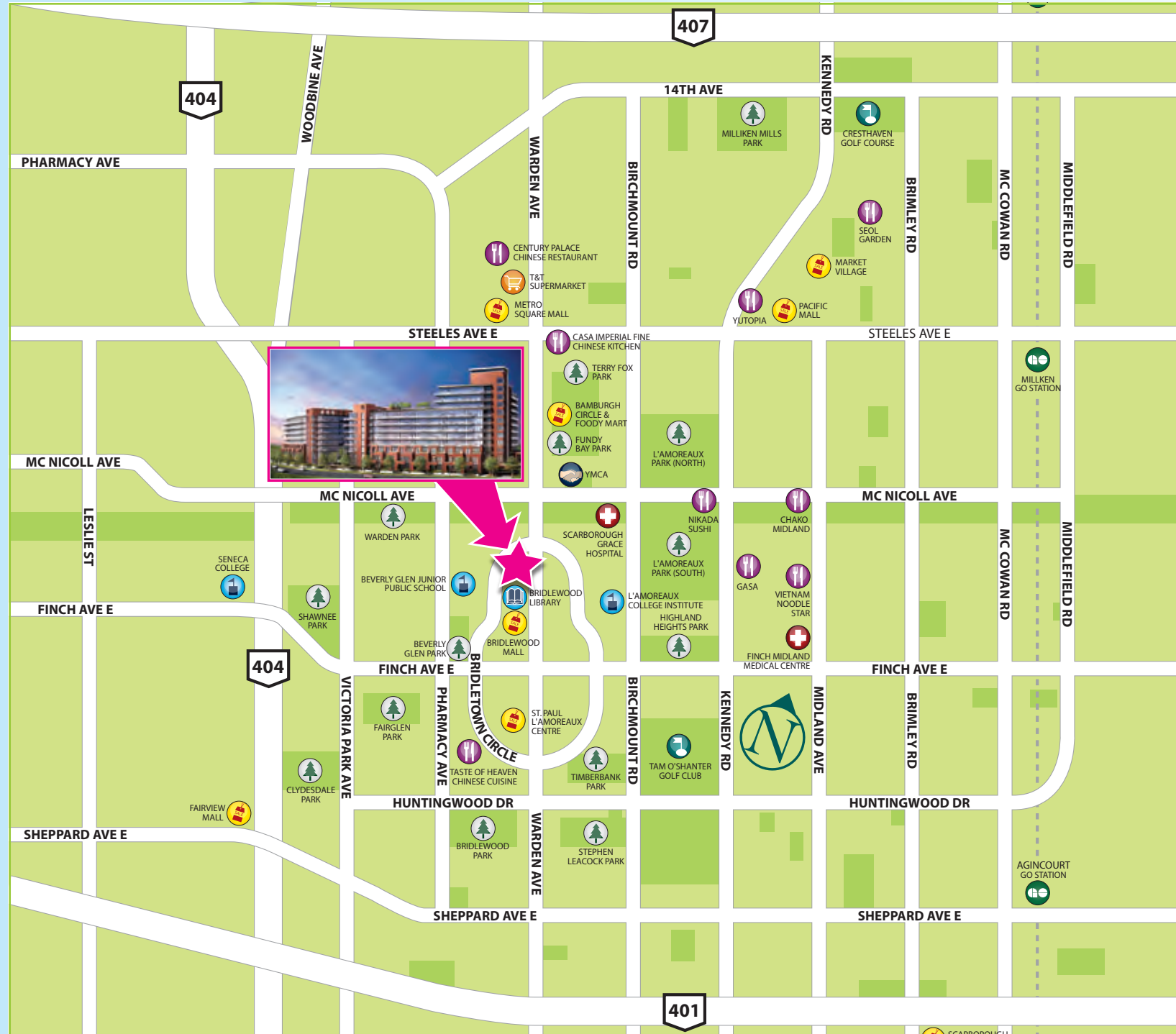
A Master Planned Community at Warden & Finch

It's where you want to live, shop, enjoy and celebrate life to its fullest. Set within the GTA, at **Warden and Finch**, Celebration Condominiums is the beginning of the renaissance of this established neighbourhood.

With the convenience of living steps to **Bridlewood Mall**, the **TTC** at your doorstep, this is the place to be.

Celebration
CONDOMINIUMS AT BRIDLEWOOD MALL

5



Map is not to scale. Artist concept only.

Legend

- | | |
|-------------|-------------|
| PARK | HOSPITAL |
| GOLF COURSE | SCHOOL |
| GO STATION | LIBRARY |
| MALL/STORE | SUPERMARKET |
| RESTAURANT | CELEBRATION |

Bridlewood Mall Key Services

- | | |
|-------------------|---------------|
| METRO | HOME HARDWARE |
| PRICE CHOPPERS | TIM HORTONS |
| MCDONALDS | RBC |
| SHOPPERS | SCOTIA BANK |
| SUBWAY SANDWICHES | WINE RACK |



Here & Near

You'll enjoy living here, just steps from Bridlewood Mall, with unparalleled shopping convenience and **easy TTC access** - so convenient, it's just steps beyond the condo's front door! Plus **Hwys. 401, 407 and 404**, and the **GO Station** are easily accessible, so it's a breeze to get to just about anywhere you want to go. Nearby, look forward to enjoying everything from **parks, outstanding golf courses, schools and of course, all the shops, restaurants and services at Bridlewood Mall.** Here & Near, there's no better place to celebrate your life!

Celebration
CONDOMINIUMS AT BRIDLEWOOD MALL



Celebration At Bridlewood Mall

Diagram is not to scale. Artist concept only.



A New Centre

As part of the renaissance of this neighbourhood, **major renovations are underway at Bridlewood Mall**, including the addition of new international retailers, such as **the retail giant Target**, as it begins its international expansion. You'll also enjoy an upscale and dynamic new ambiance, with enhanced lighting and interior designs, and an improved food court. Fun, endlessly entertaining and hip, this new centre is becoming a preminent destination location for today's trend-setting shoppers and lovers of great value.

Celebration
CONDOMINIUMS AT BRIDLEWOOD MALL



An Outdoor Celebration

*Welcome
To Your
Garden
Oasis.*

Beautifully landscaped,
expansive, well appointed
grounds with an architecturally
detailed gazebo centerpiece.
A perfect place to sit with
friends, stroll or just enjoy the
great outdoors!



Artist concept.



Let The *Festivities Begin*

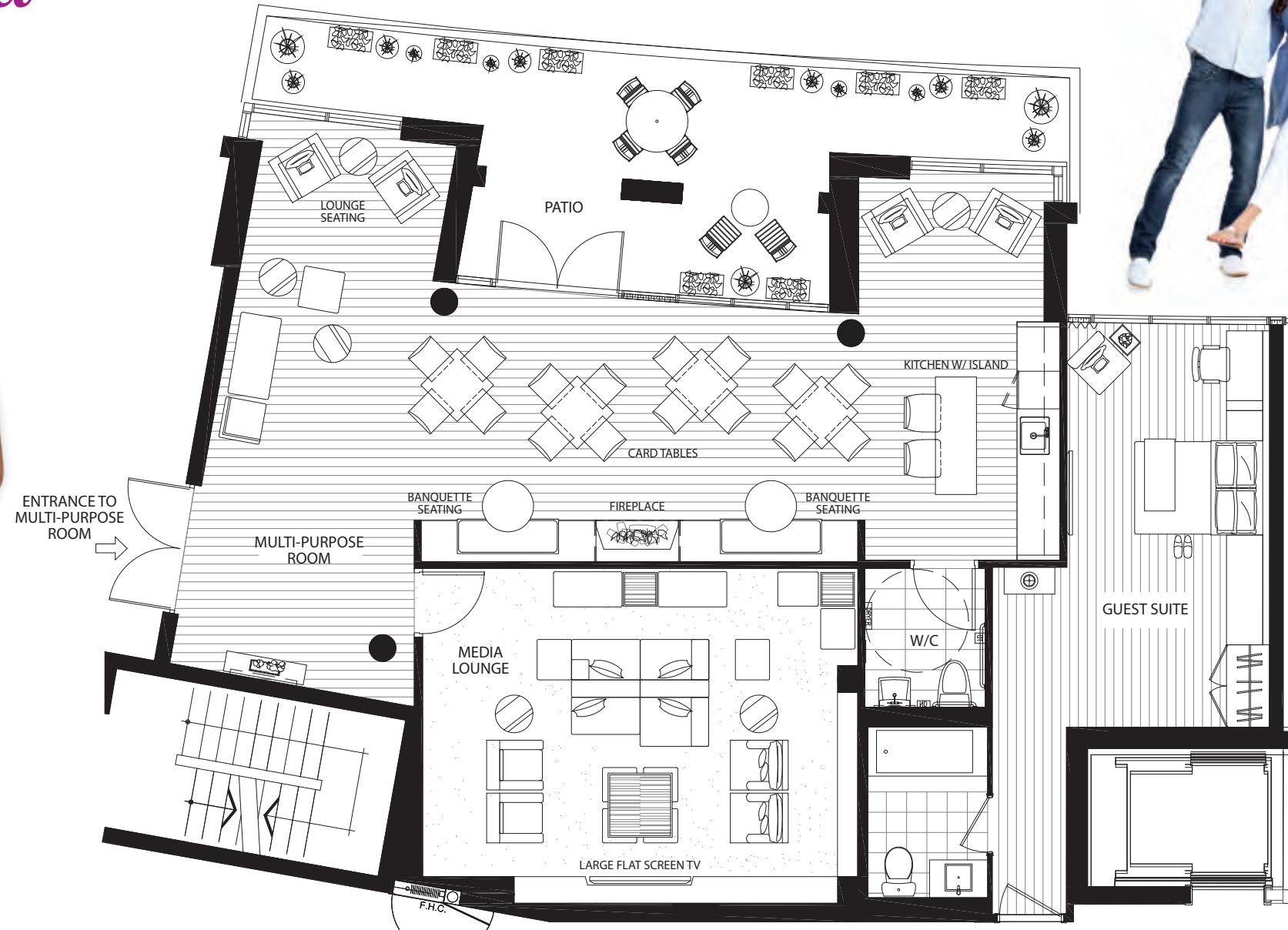
Chic, cool and contemporary, Celebration's lobby, with a trendy central reception desk and **24-hour concierge**, welcomes you home with upbeat style and attitude. You'll be thrilled by its bright and inviting colour pallet, vibrant textures, and glimmering chandelier. Amenities here are first class, with a fitness room fully equipped with the latest state-of-the-art machines.

The deluxe entertaining areas include the **Celebration Party Room** complete with a kitchen, a **sophisticated boutique style lounge with theatre** and a **hotel-style guest suite** for you to reserve when out-of-town friends or relatives visit. The fun begins here!

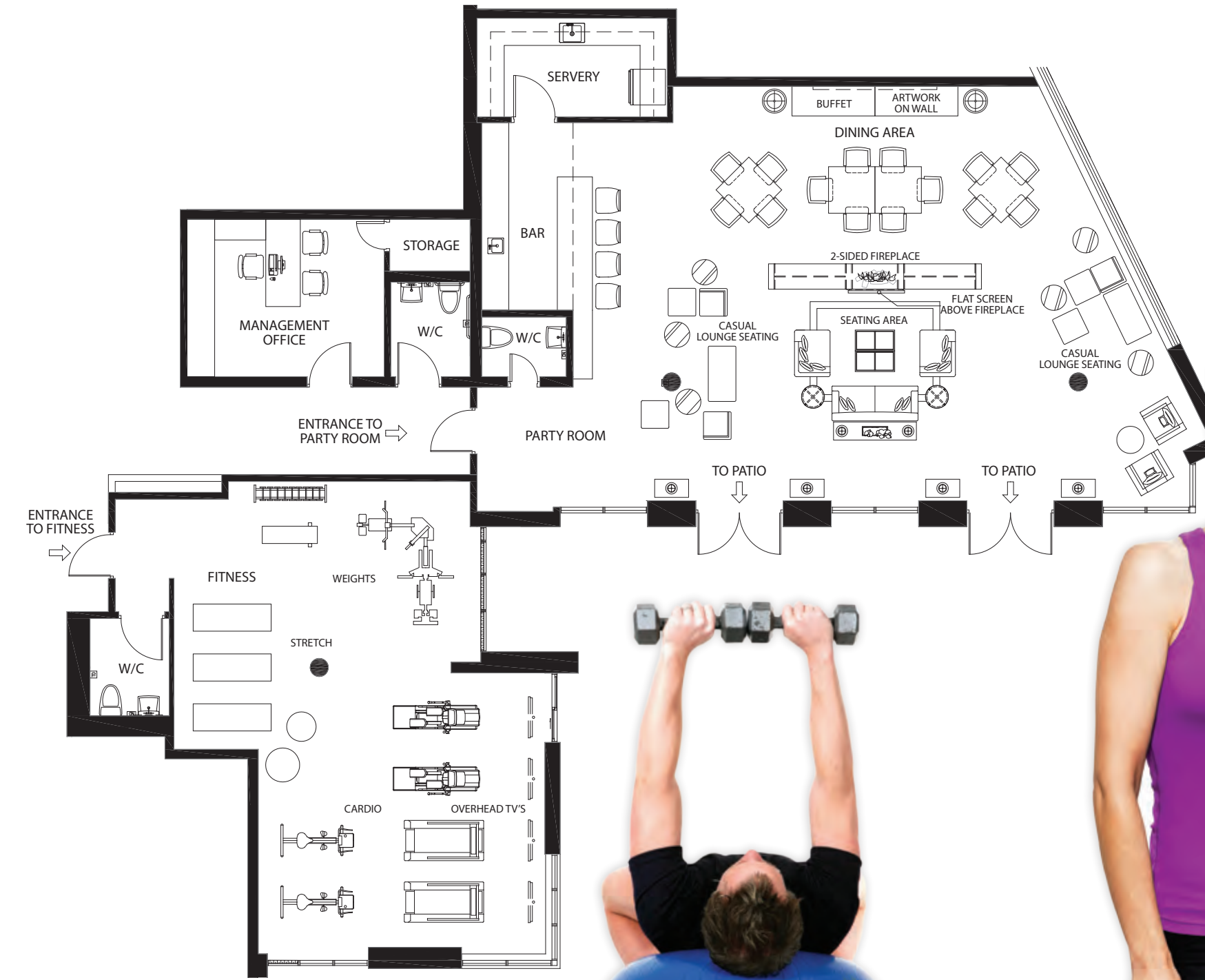
Celebration
CONDOMINIUMS AT BRIDLEWOOD MALL

13

Ground Floor North



Ground Floor South





Artist concept.



Grounds for *Celebrating*

Welcome to your **Celebration roof deck**. This beautifully landscaped, expansive, space is an idyllic place to relax and soak up the great outdoors. Your rooftop retreat **features a chic outdoor lounge, barbeques, sleek patio furniture and sun loungers**. Curl up with your iPad on a lounger, throw a party with family and friends or have fun in the sun in your private oasis.

Celebration
CONDOMINIUMS AT BRIDLEWOOD MALL



Artist concept.



A Time For Entertaining

Suite interiors will continue the boutique chic vibe, with such finishes as high-quality plank laminate flooring, a balcony, patio or terrace, and kitchens that boast solid granite counters and sleek, Euro-style cabinetry with a choice of ceramic or glass tile backsplashes. You can also choose to upgrade to the Viva Collection of suites, which boast custom kitchen islands with built-in dining table and nine-ft. ceilings in principal rooms. How entertaining is that?

Bathrooms will feature custom vanities with built-in storage and beautiful ceramic tile flooring and bath surrounds. Shower stalls will feature modern chrome framed-glass shower doors. All units will boast pressure-balanced tub and shower valve.

Celebration
CONDOMINIUMS AT BRIDLEWOOD MALL



Live Here Shop Here

Celebration is all about living life your way! This spectacular condominium will comprise **three midrise buildings** surrounding beautifully landscaped gardens with generous common amenity spaces. It has been designed by the **award-winning firm of Page + Steele Architects**, with amazing outdoor amenities and beautifully appointed interiors. Best of all, you will be living just **steps from Bridlewood Mall**, offering you unparalleled shopping convenience. Live, shop and celebrate!

Celebration
CONDOMINIUMS AT BRIDLEWOOD MALL

21

2 Acclaimed Developers Create *A Community to Celebrate*

The launch of Celebration Condominiums is the result of a partnership between award-winning residential developer, Malibu Investments, and commercial real estate leader, the Fishman Group.



MALIBU HARBOURFRONT



GRAMERCY PARK



SUNNYSIDE MALL



WOODBINE CENTRE



Malibu is a Toronto based company with major residential high-rise projects throughout the city representing over 1,500 units delivered and more than 2,500 underway. Through its commitment to using the most advanced materials, methods and technologies in the industry, Malibu Investments Inc. has set the highest standards of quality for all its developments - infusing smart urban design with a focus on excellence.

A number of Malibu's high profile projects include Malibu Harbourfront located at Bathurst and Lakeshore, Gramercy Park in North York and LTD Condos, located steps from Harbourfront. 18 Yonge Condominiums, Boutique Condos and Tableau are also successful Malibu projects in the heart of the city. Malibu, with its vast experience in the residential industry, is pleased to partner with The Fishman Group on this exceptional and vibrant new community.

www.malibutoronto.com

FISHMAN GROUP

The Fishman Group is a diversified holdings company and is recognized as a key force in the real estate industry. Over the years the company has involved itself with investments in Real Estate, Retail, Media and Telecommunication. The Group has achieved notable successes in established markets such as North America, Europe and Asia.

The Fishman Group holds several malls in the GTA, including Bridlewood Mall and Woodbine Mall and across Canada including Merivale Mall in Ottawa, Le Faubourg in Montreal and Sunnyside Mall in Halifax.

Keeping with The Group's central objective of identifying key areas such as shopping malls and residential areas, The Fishman Group is proud of its new Celebration residential vision for Bridlewood Mall.

www.fhnai.com

Celebration
CONDOMINIUMS AT BRIDLEWOOD MALL



*Let The
Celebration
Begin*

Celebration

CONDOMINIUMS AT BRIDLEWOOD MALL



mycelebrationcondos.com
416.490.8887



FISHMAN GROUP